



## ST BENET'S CATHOLIC PRIMARY SCHOOL

EXECUTIVE HEAD - MRS SAM BARLOW

ASSISTANT HEAD - MISS AMANDA LYONS

Email: [office.stbenets@cpswv.org](mailto:office.stbenets@cpswv.org) Phone: 01502 712012

Website: [www.st-benets.suffolk.sch.uk](http://www.st-benets.suffolk.sch.uk)

8<sup>th</sup> November 2024

Jesus is clear; our first priority is to love God, second is to love our neighbour. Our assembly this week reminds children that Jesus wants us to love Him first, with all our hearts, minds and strength, not sometimes or by doing good things when we feel like it but first and always.



**“Love Him with all your heart, with all your understanding and strength,  
and to love your neighbour as yourself.”**

Mark 12:33

Children will understand that:

- Jesus wants us to love God with all our heart, understanding and strength.
- Loving God first is the most important thing we can do.
- When we love God well, He helps us to love others well too.

A warm welcome back to everyone after our half term break, I hope you all had a lovely time and are well rested. We have lots to look forward to this half term as we approach the Christmas season. Keep a look out for key dates on the website and newsletter.

Thank you to all the parents of Beech class at St Benet's for your patience and understanding as we commence the ceiling repairs in the Early Years building. It was an unexpected 'surprise' but having Monday to make the move really helped us ensure we can continue to provide quality education for your children. Keep praying that the works will take no more than 5 weeks and we can move the children back to where they are most familiar. I want to give thanks to the staff in Beech Class for their determination and commitment this week to making sure the new room was ready for the children.

Our open mornings have been a success in both schools, however we continue to strive to grow the schools and welcome your support with this. If you know of any family looking for a small primary school with a family feel, please send them our way. We are happy to show parents around any time.

Thank you for your continued support. Mrs Barlow

### **Breakfast club**

St Edmund's are asking for feedback from parents as to whether this is something you would use regularly. We have applied for some funding to support setting this up again but really need to be able to make it viable, have at least 10 children attending on a daily basis. If this is something you would definitely make use of please can you let the office know by Friday 15h November.

The funding may also stretch to after school care, so again if this is something you would use regularly please let us know.

### **Uniform**

A gentle reminder that we have a set school uniform for winter which is in place now. This is shirt, tie, jumper or cardigan (blazer optional). Polo shirts should not be worn now as part of the main school uniform, with the exception of Reception children.

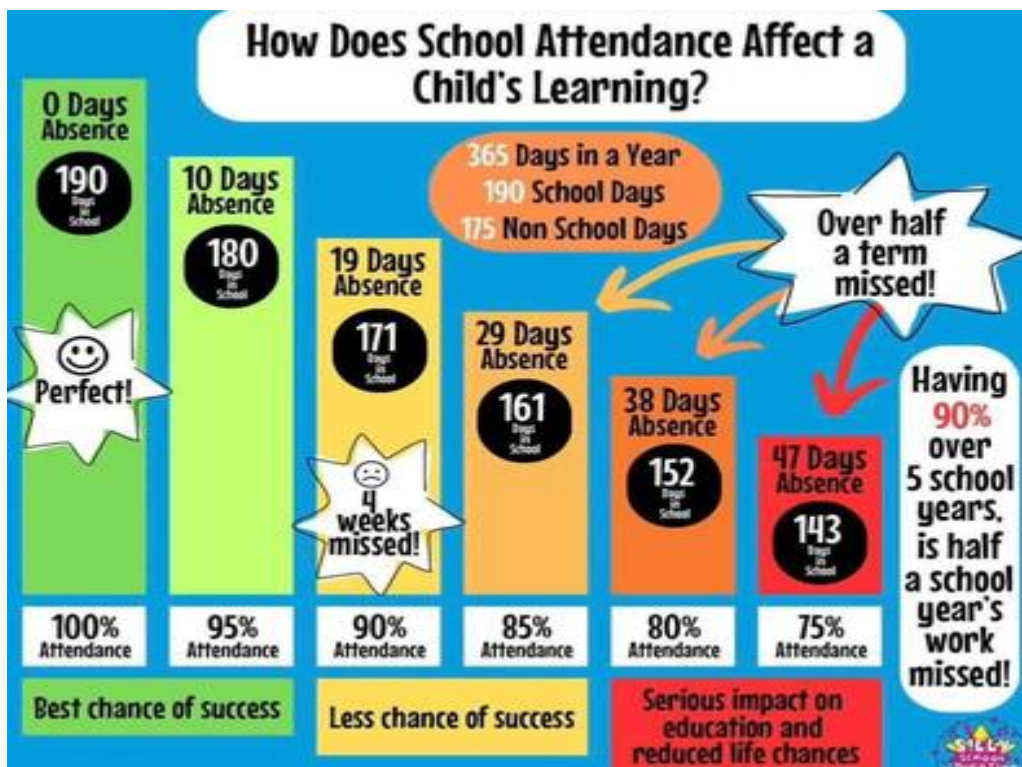
**PE kits** - Please only send your child in with the PE kit for the school. This should be t-shirt/polo shirt in school colour, hoody and shorts in school colour. In winter they can wear plain joggers if it is too cold for shorts.

We are seeing more and more variation on this with children coming in dressed entirely in their own clothes.

If you need support with purchasing uniform because you access pupil premium, please let us know and we will be happy to purchase this for you. Otherwise we have a selection of second hand uniform you can look through. Again just email the school office and they can sort a time for you to look through this.

Attendance

Our goal this week is 96%. Well done to the classes that have achieved or excelled this.



Year Group	St Benet's	St Edmund's
R	95%	96%
1	94%	99%
2	97%	98%
3	91%	97%
4	97%	95%
5	85%	97%
6	89%	92%



Roman, you are always a good friend. You care about others and show this in many ways. You are thoughtful and you take time to make everyone feel cheery. Your smile is a delight, what a star!



Willow, you are always sensitive to how others are feeling and help them to express how they feel too. You help them share their thoughts and find help if they need it. You are a wonderful friend Willow and people are very fortunate to have you as theirs. You are a star!

This week's Heart of Gold award in Rowan class goes to Isabella. Isabella is an inspiring member of our class who always tries her best in everything she does. She is kind and caring to everyone and can always be trusted to look out for those who need help.



The heart of gold this week, as voted for by the class, goes to Lincoln for being a fun, kind and supportive friend. Very well done to you!



## Treat Table



### FIRST HOLY COMMUNION PROGRAMME

"If you would like your child to participate in the First Holy Communion programme this year please complete a consent form. These can be found at the back of the church or on the parish website.

Please return the forms either in person to Maura Williams or electronically to [Stbenetsfhc2025@gmail.com](mailto:Stbenetsfhc2025@gmail.com) Children must be Year 3 or above to take part in the programme." Thank you.

Library book changing day is Wednesday each week. Please could children bring in their school library books on that day. Thank you.



Message from Mrs Tyler

A BIG thank you for the lovely cards, flowers and good wishes from you all.

I have really enjoyed being at your school. Wishing you all the very best for the future.

**Dates for your Diaries**

Tuesday, 12<sup>th</sup> November – Year 6 Crucial Crew

Thursday, 12<sup>th</sup> December – Save the Children Christmas Jumper Day

Wednesday, 18<sup>th</sup> December – School Christmas Lunch

Friday, 20<sup>th</sup> December – Finish for Christmas

Tuesday, 7<sup>th</sup> January – Return to School

Mass Times at St Benet's Catholic Church 11am every Sunday.

